

ELEV. VIEW  
3/32" = 1'-0"

B79LP-HP  
REV. 1.0

Dealer:

Customer:

This drawing is property of Hawkeye Steel Products, Inc. Any reproduction of this drawing without consent of Hawkeye Steel Products, Inc. is strictly prohibited.

Drawn By:  
J.R.B.W.

Checked By:

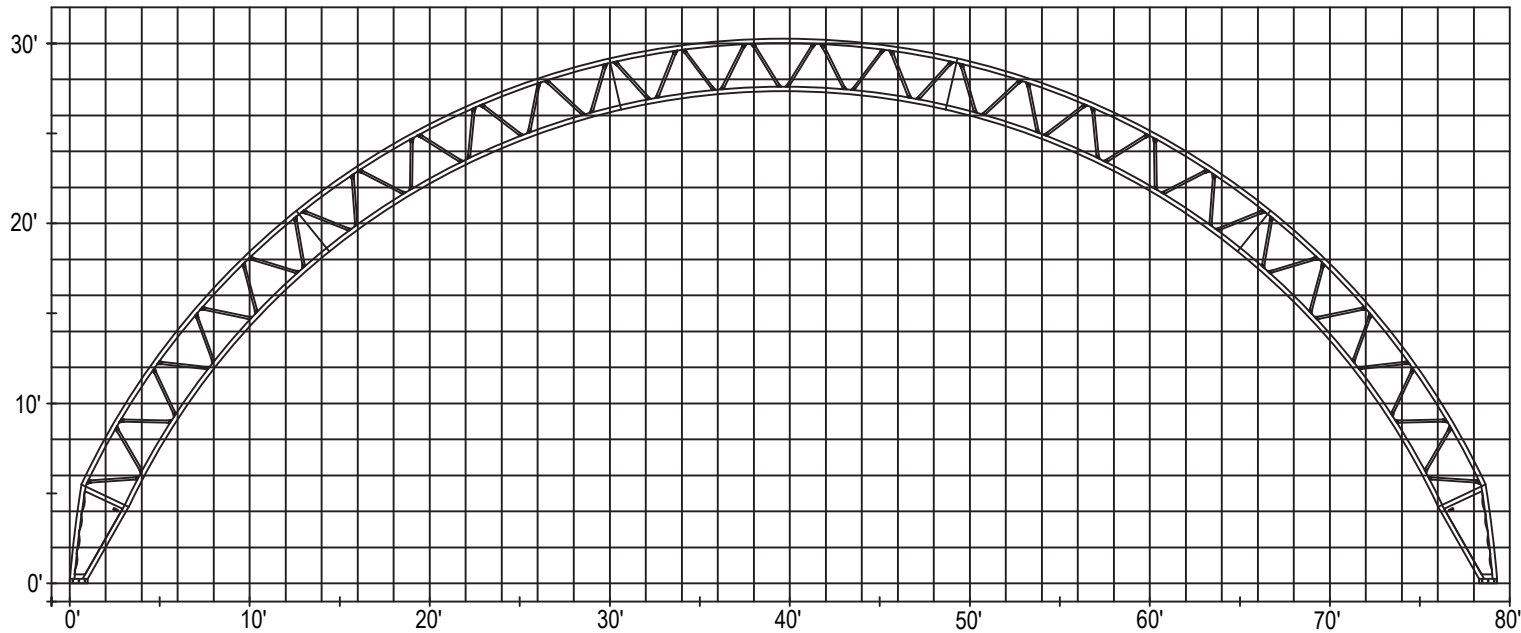
Date:  
5/1/2011

Project Number:

Sheet Number:

PO BOX 2000 - HOUGHTON, IA 52631 USA  
Phone: 319-469-4141  
Fax: 319-469-4402  
Website: www.span-techbuildings.com

**Span-Tech** Fabric Buildings



ELEV. VIEW  
3/32" = 1'-0"

B79LP-GP  
REV. 1.0

Dealer:

Customer:

This drawing is property of Hawkeye Steel Products, Inc. Any reproduction of this drawing without consent of Hawkeye Steel Products, Inc. is strictly prohibited.

Drawn By:  
J.R.B.W.

Checked By:

Date:  
5/1/2011

Project Number:

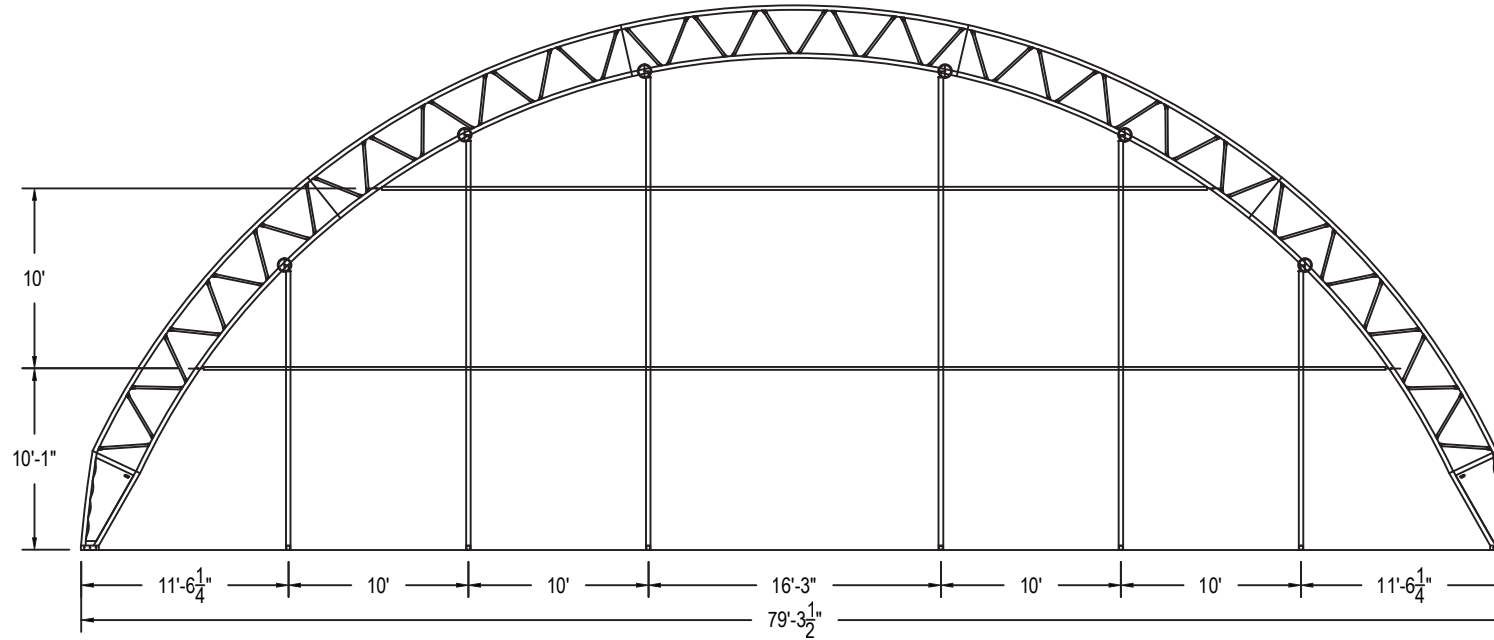
Sheet Number:

PO BOX 2000 - HOUGHTON, IA 52631 USA  
Phone: 319-469-4141  
Fax: 319-469-4402  
Website: www.span-techbuildings.com

**Span-Tech** Fabric Buildings

END WALL NOTES:

- A. SHOWN IS THE STANDARD END WALL DESIGN. CUSTOM END WALLS AVAILABLE, COST DETERMINED PER REQUIREMENTS.
- B. STANDARD UPRIGHT COLUMNS ARE OPEN WEB DESIGN. OPEN WEB COLUMNS ARE DESIGNED FOR FABRIC DOORS AND OPENINGS ONLY.
- C. HEAVIER DOORS CAN BE FRAMED IN USING STRUCTURAL C-CHANNEL OR RECT. TUBE. PRICING AVAILABLE ON PRICE LIST.
- D. STANDARD END WALL DOES NOT COME WITH HEADER.



ELEV. VIEW  
3/32" = 1'-0"

B79LP-EP  
REV. 1.0

Dealer:

Customer:

This drawing is property of Hawkeye Steel Products, Inc. Any reproduction of this drawing without consent of Hawkeye Steel Products, Inc. is strictly prohibited.

Drawn By:  
J.R.B.W.

Checked By:

Date:  
5/1/2011

Project Number:

Sheet Number: